

# Medium Pipe Chase Housing Model AL 1001

## Pipe Chase Housing Benefits

- Provides a path to the roof for multiple pipes in a high rain tight housing.
  - Can easily accept 18 pipes.
  - Seals are designed to accommodate any pipe size between 1/4 inch outside diameter to 1 1/2" OD.
  - Constructed of powder coated aluminum with welded seams.
- ÁÁÁ
- Á
- Á
- Assembled with stainless steel hardware.
  - Gasket connections between curb, housing and lid.



Pipe Chase Housing

## Medium Pipe Chase Housing Installation Instructions

### Step 1 Roof opening

The roof opening size is 11 1/2 by 17 1/2. This dimension is 2 inches smaller than the curb. This will provide a 1 inch ledge around the inside of the curb to support the insulating and sound attenuating barrier.

### Step 2 Setting Curb

Remove the stainless steel screws from the lid and inside the housing. Take care to place the screws in a safe place. Set the lid and housing aside for now. Center the curb over your hole and level. Use the appropriate screw to attach the curb to the roof plywood decking. This will require thirty four screws for maximum strength.

### Step 3 Roofing Curb

The curb has an insulated base and a built in 3 inch counter flashing to protect the leading edge of the roof. Run the roofing to the top edge of the curb taking care not to cover the screw holes on top. The gasket in the bottom of the housing is designed to be wide enough to seal off against the top of the curb and leading edge of the roof at the same time. There is a 1/2" clearance around the curb for roofing. If you exceed this thickness the housing will not slide over the top of the curb.

### Step 4 Housing

Place housing back on the curb and attach with stainless steel screws. The housing is designed to counter flash the curb with a 3 inch skirt. The housing gasket will seal against the top of the curb and leading edge of the roof. The outside walls of the housing have dimples and bumps. The dimples identify the locations to drill holes for your piping. The bumps identify the boundary of the penetration area. The bumps define the field for penetration and prevent you from drilling too close to the skirt and corners of the housing. Seals have been designed to be used with the housing to provide the best seal possible around the pipes passing through the housing wall. The dimples are offset on opposite sides to prevent pipes from colliding inside the housing. This dimple pattern maximizes the number of pipes that can penetrate the housing.

### Step 5 Seals

Each seal is designed to work on a range of pipe sizes. There are 10 seals to cover all pipe sizes between 1/4 inch outside diameter and 1 1/2" OD. Each seal range is in 1/8 inch increments. The first seal has a range from 1/4 inch to 3/8. Any outside pipe size

that fall on or between 1/4 inch and 3/8 inch will fit this seal. The next seal range is 3/8 to 1/2 inch any pipe OD sizes on or be-



tween 3/8 and 1/2 inch will fit this seal. This pattern continues up to 1 1/2" outside diameter pipe size. The hole size to be drilled in the housing to receive the seals is 2 1/4 inch. All the seals have the same body size, threaded nipple and retaining nut. The caps have different size holes and seal for different pipe sizes. This design allows you to move a pipe without moving the body of the seal. The caps can be rearranged during installation to accommodate last minute changes. To remove a pipe run that is no longer used a blank cap can replace the pipe seal cap. These pipe seals are not water fittings and should never be used in a water system.

# MEDIUM PIPE CHASE HOUSING

## Step 6 Piping

After your seals are installed in the housing you are ready to run your piping. You can run any pipe size between 1/4 inch outside diameter to 1 1/4 inch outside diameter. The seals are PVC and rubber and will be damaged if exposed to heat from brazing or soldering piping. Move the seals down the pipe and wrap with a wet cloth to protect them.

The insulation in the curb has two cuts in it to allow piping to pass through. The insulation has three functions. Maintain the insulating envelope of the building. Reduces sweating that may occur inside the housing and sound attenuation. Keeping your piping centered in these two cuts will organize your pipe drop.

## Step 7 Water

Freeze protection is a must. Draining the water line after each use will insure the water line will not freeze. All piping must provide for complete drainage. No water can be allowed to be trapped in the line. This will require a shut off and drain down line in the building. The valve on the roof must be opened to let air in the line allowing the water line to drain completely back to the source. The only time water is in this line is when it's being used on the roof. Plumbing must meet all local and state codes.

## Step 8 GFCI outlet

Code requires an outlet within 25 feet of the air conditioning equipment. In most cases the housing will meet that requirement.

## Step 9 Tower

The Tower is an accessory to the Pipe Chase Housing. Designed to extend the height of the housing to allow for mounting disconnects and control boxes. Ideal for condensing units placed in the center of a roof with no acceptable locations to mount disconnects. The lid is removed from the housing and the tower is bolted to the housing using the existing lid bolt pattern. The matching bolt pattern on the top of the tower allows the lid to then be bolted to the top of the tower. Please use 1/4 20 bolts and gaskets to mount disconnects and boxes to the tower.



The Tower extends the housing providing space to mount disconnects and control boxes.

## Tools needed for installation

You will need the following tools to install the Pipe Chase Housing.

- Drill with a 2 1/4 inch hole saw
- Philips screw driver
- Strap wrench to tighten seals

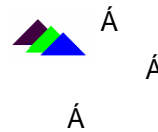
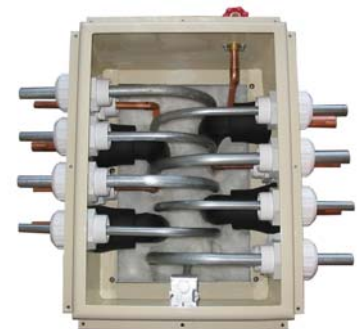


Seals are available in 10 sizes to accommodate any pipe size between 1/4 inch outside diameter to 1 1/4 inch OD.



1/4 inch outside diameter to 1 1/4 inch OD pipe seals are available.

**WARNING : Pipe Seals are not designed to be water fittings and should never be used as a fitting in a water system.**



## MEDIUM PIPE CHASE

