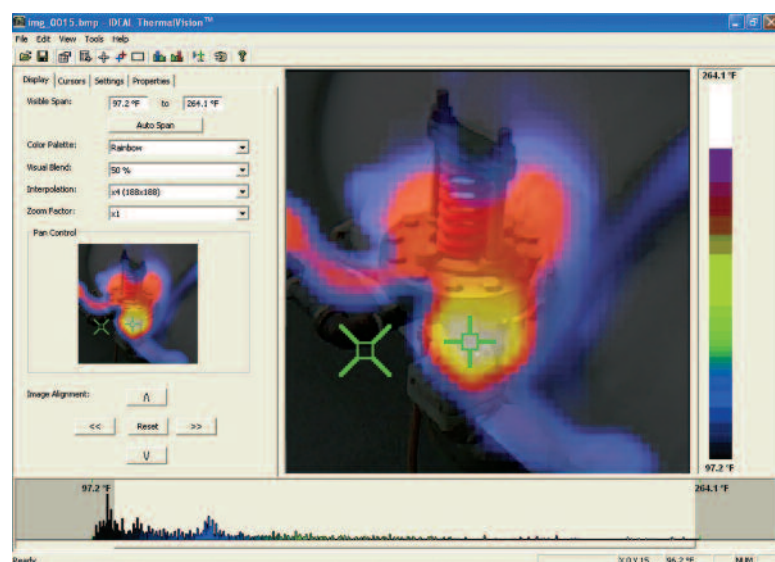


IDEAL® HeatSeeker™ Thermal Imager



ThermalVision™ PC Software Included

Easy-to-use software allows image download to PC for analysis.

Features

- View, edit and analyze images
- Automatic report generating capabilities
- Disk also includes user manual

| Description | Cat No. |
|--|---------|
| HeatSeeker™ Thermal Imager, Removable Handle, Carrying Case, Power Supply, ThermalVision PC Software and USB Cable | 61-844 |

| Accessories (included) | |
|------------------------|-----------|
| USB Cable | 61-844USB |
| Camera Handle | 61-844HAN |
| Carrying Case | 61-844CC |
| Power Supply | 61-844PS |
| ThermalVision Software | 61-844SW |
| Accessories (optional) | |
| Light Shade | 61-844LS |
| Car Charger | 61-844CAR |



Innovation with a Purpose.

IDEAL INDUSTRIES, INC.
Becker Place, Sycamore, IL 60178, USA / 815-895-5181 • 800-435-0705 in USA

International offices:
Australia • Brazil • Canada • China • Germany • Mexico • Puerto Rico • UK
For complete sales office contact information, visit us at:
www.idealindustries.com • www.testersandmeters.com

©2009 IDEAL INDUSTRIES, INC. • Printed in U.S.A. • Form No. P-2856 • Rev. 1/09

IDEAL Test & Measurement. Designed for maximum performance and accuracy.

Electricians trust IDEAL to provide instruments for the needs of professionals — making the job easier and safer, and supported by the finest level of customer service and technical support in the industry.



TightSight® Clamp Meters

(61-764, 61-766, 61-768, 61-772, 61-774)

- Unique TightSight® bottom display
- Measures up to 660AAC
- Voltage-presence warning on all lead functions (selectable audible)
- Bright, bold backlit display
- Tapered jaws with hook tip
- Max/min/inrush



Insulation Meter

(61-797)

- Checks new and existing installations for proper insulation
- Checks motor windings for breakdowns in insulation
- Calculates PI and DAR automatically
- Tests at 50/100/250/500/1000V



3-Phase Power Analyzer

(61-805, 61-806, 61-807)

- True RMS
- Single-or three-phase measurements
- Data logging (1MB memory)
- Up to one month of recording time
- 4-channels for voltage measurements



Infrared (IR) Thermometer

(61-685)

- Measurement range of -76° to 932° F
- Single-spot laser sighting
- Maximum, Minimum, Difference (Δ) and Average temperature displays
- Programmable High and Low Alarms
- Supports K-type Thermocouple
- Adjustable emissivity for maximum accuracy

For complete details on the full line of IDEAL Test & Measurement products, visit www.testersandmeters.com.

HeatSeeker™ Thermal Imager

*Measure temperatures accurately
and cost-effectively*

- Easy-to-use maintenance monitoring tool
- Auto hot/cold tracker
- Image blending of thermal and digital
- Troubleshoot potential problems quickly
- Mark images with text and voice annotation



Overlays a thermal image on top of a digital image for easy identification of potential problem areas

Available at: www.LicensedElectrician.com



HeatSeeker™ Thermal Imager

Troubleshoot and identify potential problems before they happen with the IDEAL HeatSeeker™ Thermal Imager. What makes HeatSeeker so useful are the dual cursors that instantly locate the hottest and coldest temperatures on a live screen, and the camera's ability to overlay a thermal image on top of a digital image for easy on-the-job decision making. HeatSeeker's easy set-up and operation make it a cost-effective tool for electrical service, industrial maintenance and building inspection.



Features

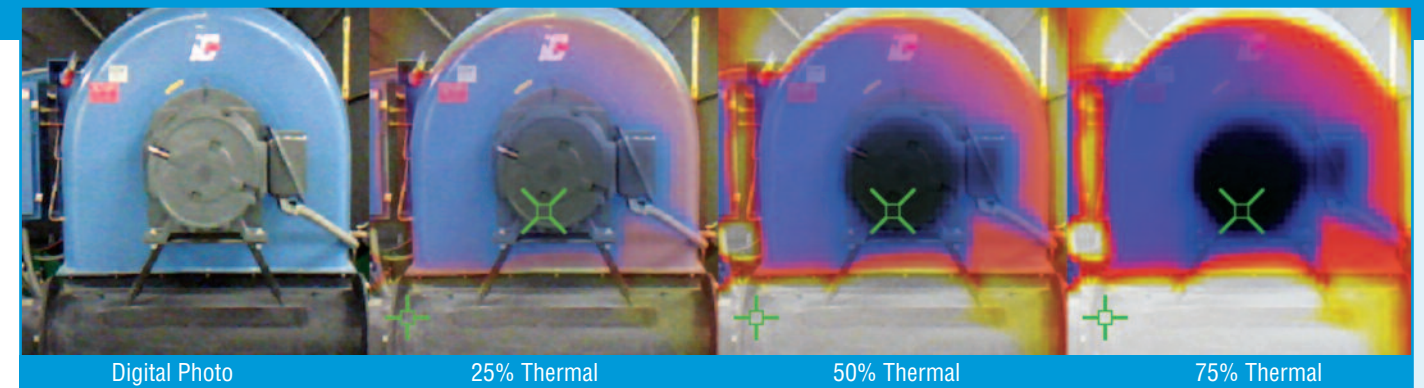
- Blended thermal/digital image
- Hottest/coldest temperatures displayed instantly on live screen
- 1,849 temperature measurements live on camera screen
- Class II Laser
- Built-in LED illuminator
- High and low temperature alarms
- Mark images with text and voice annotation
- Measurement range of 14° F to 660° F
- Adjustable emissivity for maximum accuracy
- Accuracy of +/- 2% or +/- 4° F
- 6-hour battery life
- Tripod mountable
- Carrying case included
- ThermalVision PC software included
- 2-year warranty



Removable handle

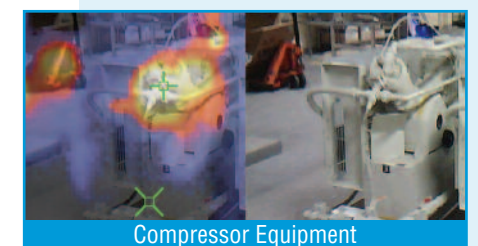
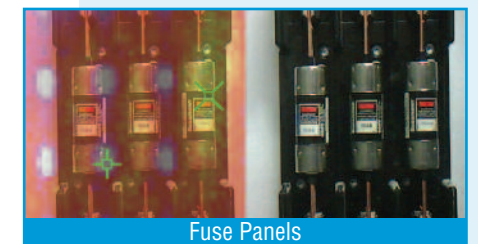
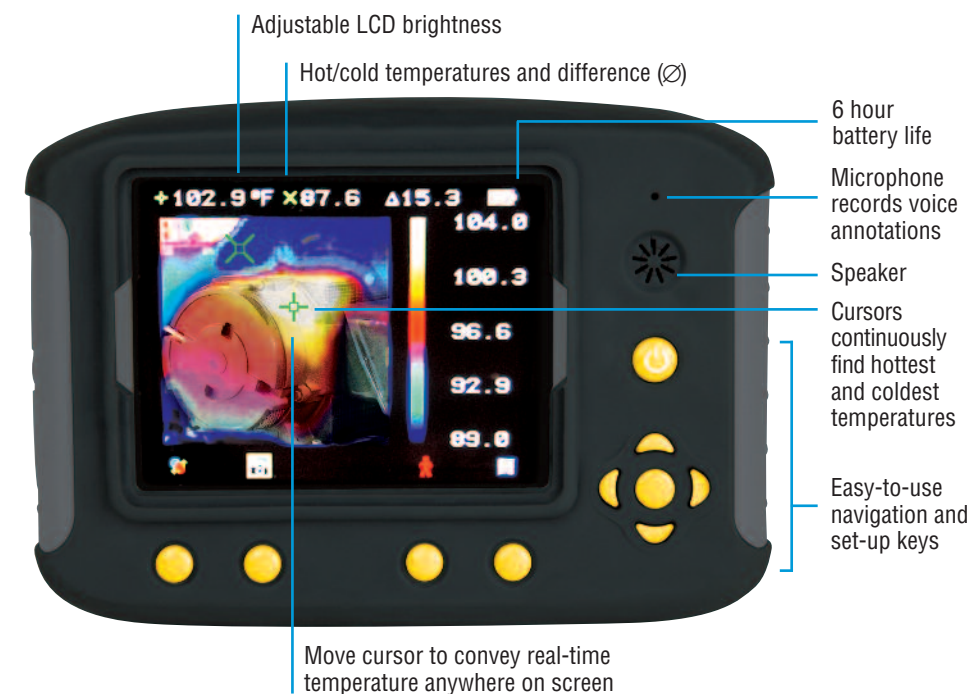


Side door allows quick access to headphone and USB connections, charging port and removable Micro SD card



Adjustable Blended View for Ease of Use

The HeatSeeker captures both a full infrared image and a digital photo. The thermal image can be overlaid on top of the digital image in various % blends for clarity.



Heat Seekers: HOT COLD

The hottest and coldest temperatures are automatically located by the dual cursors to quickly and accurately identify problem areas.

HeatSeeker™ provides real-time analysis and is ideal for:

Electrical Safety

- Identifies overloaded circuits, loose/corroded connections and failing breakers in electrical panels
- Identifies blown fuses, overloads, phase imbalance and harmonics problems
- Identifies hot spots from high resistance connections

Energy Efficiency

- Identifies inefficient heating and cooling transfer
- Identifies draft sources from missing insulation in rafters/walls/floors
- Identification of problem areas helps reduce heat gain/loss and carbon footprint

Building Maintenance

- Discovers sources of moisture in roofs and areas behind walls
- Checks air distribution for blockages in pipes, damaged duct work and insulation gaps
- Checks fluid distribution for stuck valves and burst pipes

Preventive Maintenance

- Identifies equipment efficiencies/inefficiencies
- Applications include motors, pumps, boilers, radiators, heaters, chillers and transformers

Available at: www.LicensedElectrician.com